

TP ④		VOLTS 120/208		MAIN CAPACITY 200 A MLO		A WATTS 5040	
		PHASE 3		BUS MATERIAL		B WATTS 4020	
		WIRE 4		MOUNTING		C WATTS 4320	
						TOTAL WATTS 13380	
EXISTING L1 PANEL							
CIRC	LOCATION / DESCRIPTION	BRKR	WATTS	#	WATTS	BRKR	LOCATION / DESCRIPTION
1	ACR / MAIN MON	20-1	960	A	1200	20-1	ACR / ATMOS#1
3	ACR / ATMOS#2	20-1	720	B	600	20-1	ACR / DESK 1
5	ACR / DESK 2	20-1	600	C	600	20-1	ACR / DESK 3
7	SL	20-1	360	A	600	20-1	VCR
9	VCR / MONITORS	20-1	540	B	1200	20-1	STUDIO 2
11	STUDIO / PA. MON	20-1	600	C	360	20-1	PODCAST
13	CMR / RACK	20-1	960	A	960	20-1	CMR / RACK
15	DJ BOOTH	20-1	600	B	360	20-1	DJ BOOTH DISPLAY
17	UPS1	20-1	1200	C	600	20-1	UPS2
19	SPARE	20-1	0	A	0	20-1	SPARE
21	SPARE	20-1	0	B	0	20-1	SPARE
23	SPARE	20-1	0	C	0	20-1	SPARE

UT		VOLTS 120/208		MAIN CAPACITY 200 A MLO		A WATTS 8176	
		PHASE 3		BUS MATERIAL		B WATTS 9776	
		WIRE 4		MOUNTING		C WATTS 10260	
						TOTAL WATTS 28212	
EXISTING L2 PANEL							
CIRC	LOCATION / DESCRIPTION	BRKR	WATTS	#	WATTS	BRKR	LOCATION / DESCRIPTION
1	ACR / DESK	20-1	600	A	600	20-1	ACR / DESK
3	ACR / DISPLAY	20-1	360	B	600	20-1	ACR
5	SL	20-1	600	C	600	20-1	VCR / DISPLAY
7	VCR	20-1	600	A	1200	20-1	STUDIO 1
9	STUDIO 2	20-1	1200	B	960	20-1	STUDIO / PL 1
11	STUDIO / PL 2	20-1	960	C	960	20-1	STUDIO / PL 3
13	STUDIO / PL 4	20-1	960	A	960	20-1	STUDIO / PL 5
15	STUDIO / PL 6	20-1	960	B	1200	20-1	STUDIO 3
17	POD / DISPLAY	20-1	600	C	600	20-1	PODCAST 1
19	PODCAST 2	20-1	360	A	960	20-1	CMR / RACK
21	DJ BOOTH	20-1	600	B	360	20-1	DJ BOOTH / RECEIPTS
23	CORRIDOR/DJ/LOUNGE / LIGHTS	20-1	388	C	560	20-1	PODCAST/ACR/SL/VCR / LIGHTS
25	STUDIO / LIGHTS	20-1	480	A	0	20-1	SPARE
27	SPARE	20-1	0	B	0	20-1	SPARE
29	SPARE	20-1	0	C	0	20-1	SPARE
31	SPARE	20-1	0	A	0	20-1	SPARE
33	SPARE	20-1	0	B	0	20-1	SPARE
35	SPARE	20-1	0	C	1456	20-2	DUCTED MINI SPLIT (OU1/U1)
37	SPARE	20-1	0	A	1456	-	-
39	WALL MOUNTED MINI SPLIT (OU2/OU2)	25-2	1976	B	1560	25-2	CEILING CASSETTE (OU3/U3)
41	-	-	1976	C	1560	-	-

GENERAL NOTES:

- VERIFY POWER, AND LIGHTING REQUIREMENTS FOR OWNER'S SPECIFIC EQUIPMENT PRIOR TO ROUGH-IN.
- COORDINATE INSTALLATION OF EQUIPMENT WITH MANUFACTURERS' INSTALLATION INSTRUCTIONS PRIOR TO ROUGH-IN.
- CONTRACTOR SHALL MAINTAIN FIRE RATING OF ANY PENETRATION AND SHALL SEAL ANY PENETRATION IN A FLOOR, CEILING, OR EXTERIOR WALL.
- VERIFY RECEPTACLE MOUNTING HEIGHTS AND LOCATIONS WITH OWNER AND ARCHITECTURAL ELEVATIONS PRIOR TO ROUGH-IN.
- SEE AV DRAWINGS.
- SEE SHEETS 11.1, 11.2, 11.3.

KEYED NOTES:

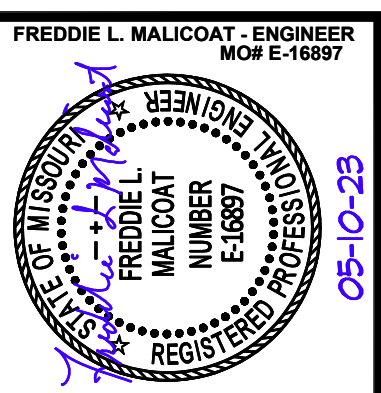
- EXISTING PANEL.
- INTERRUPT EXISTING FEEDERS (4-#3/0, 1-#6 GROUND) AND EXTEND TO SPD. REFEED L1 FROM SPD.
- UPS MOUNTED UNDER DESK.
- ALL RECEPTACLES ROUTED TO PANEL "TP" ARE ISOLATED GROUND (IE, TP-1, TP-2, ECT)

GENERAL MECHANICAL-ELECTRICAL SPECIFICATIONS

- ALL WORK SHALL BE DONE IN STRICT CONFORMANCE TO THE BUILDING CODES OF THE CITY OF JEFFERSON, MO.
- ALL MATERIALS SHALL BE NEW, FIRST CLASS, AND INSTALLED TO MANUFACTURER'S WRITTEN SPECIFICATIONS.
- ALL SYSTEMS SHALL BE COMPLETE AND OPERABLE IN EVERY WAY.
- DO ALL EXCAVATION, BACKFILLING, CUTTING, PATCHING, OFFSETTING, ADJUSTING AND BALANCING AS REQUIRED TO COMPLETE THE JOB.
- SPECIFIC MODELS ARE SPECIFIED TO ESTABLISH QUALITY ONLY. ENGINEER'S DECISION SHALL BE FINAL ON ALL MATERIAL SELECTIONS OR SUBSTITUTIONS.
- MAINTAIN SAFETY SIGNS AND BARRIERS AS REQUIRED TO ASSURE SAFE WORKING CONDITIONS.
- GUARANTEE ALL WORKMANSHIP AND MATERIALS FOR ONE YEAR FROM FINAL ACCEPTANCE. PROVIDE FIVE YEAR AIR CONDITIONING COMPRESSOR WARRANTY ON NEW UNITS.
- EACH CONTRACTOR SHALL BE RESPONSIBLE FOR CLEANING UP HIS OWN DEBRIS.
- CONTRACTOR SHALL NOT BE RESPONSIBLE FOR PROPER OPERATION OF OWNER-FURNISHED MATERIALS.
- INSPECT JOB SITE PRIOR TO BIDDING TO DETERMINE EXACT JOB REQUIREMENTS. SEE ARCHITECTURAL DRAWINGS FOR DEMOLITION AND CONSTRUCTION DETAILS.
- REMOVE ALL UNUSED PLUMBING, HVAC, AND ELECTRICAL WHETHER OR NOT SPECIFICALLY NOTED AND PROPERLY TERMINATE REMAINING SERVICES. ALL EXISTING PLUMBING, HVAC, AND ELECTRICAL SHALL BE REWORKED TO COMPLY WITH CODE WHETHER OR NOT SPECIFICALLY INDICATED.
- ALL REMOVED MATERIALS SHALL BE REMOVED FROM SITE OR GIVEN TO OWNER AT OWNER'S DIRECTION.

ELECTRICAL SPECIFICATIONS

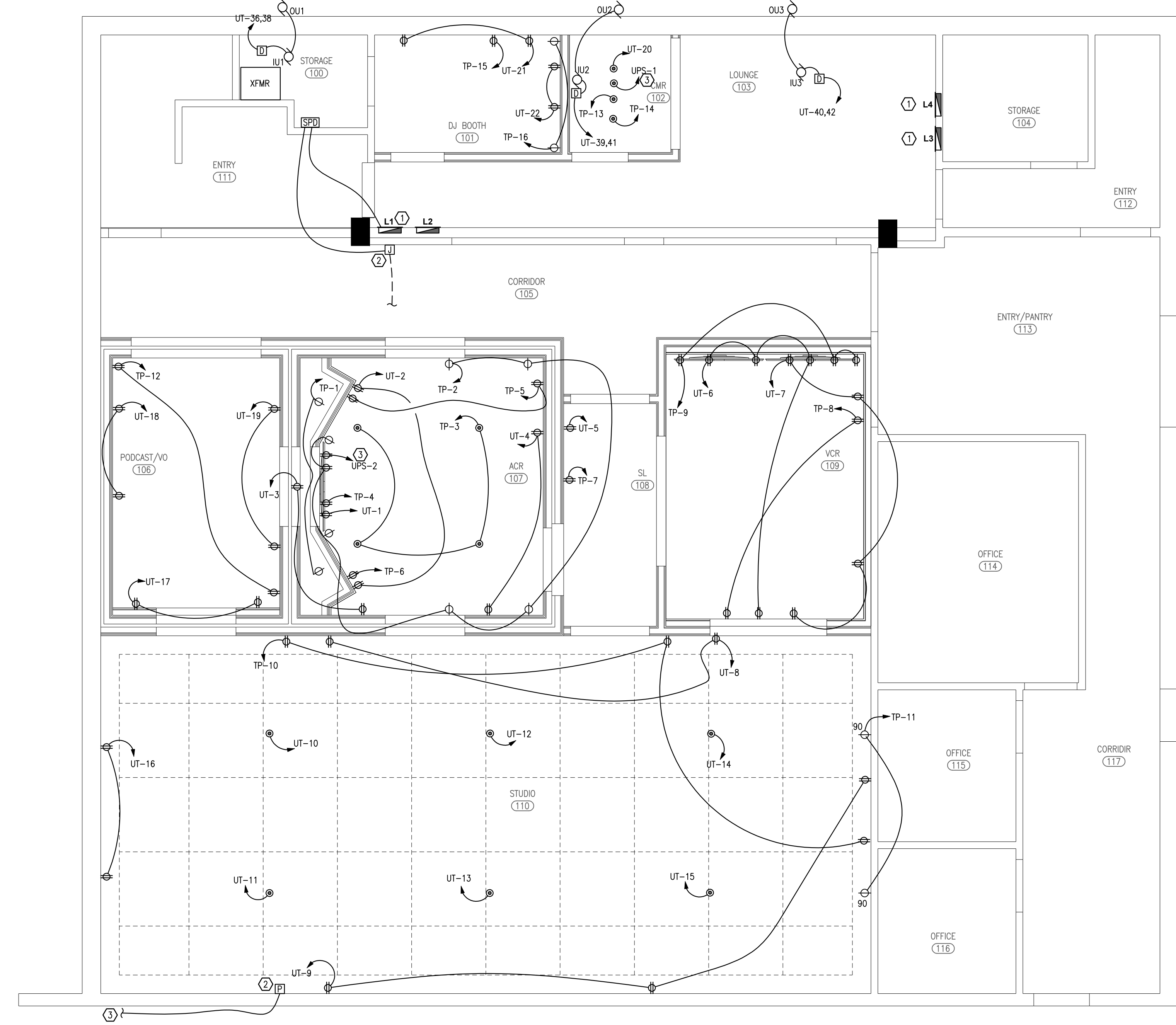
- SEE GENERAL MECHANICAL-ELECTRICAL SPECIFICATIONS.
- ALL CONDUCTORS SHALL BE COPPER MINIMUM #14 OR LARGER AS REQUIRED OR SHOWN.
- ALL EQUIPMENT SHALL BE RATED FOR 75° C. CONDUCTORS.
- ALL OTHER WIRING SHALL BE IN EMT OR MC CABLE.
- WALL SWITCHES SHALL BE LEVITON #1120 SERIES, OR APPROVED EQUAL, 20A.
- DUPLEX CONVENIENCE RECEPTACLES SHALL BE LEVITON #5362 SERIES, OR APPROVED EQUAL, 20A, GROUNDING TYPE. USE SIDEWIRING ONLY, NOT BACKWIRING. COLOR AS SELECTED BY ARCHITECT.
- SPECIAL OUTLETS SHALL BE AS REQUIRED OR SHOWN ON DRAWINGS, COMPLETE WITH COVER PLATE.
- THE ENTIRE SYSTEM SHALL BE ELECTRICALLY CONTINUOUS AND PROPERLY GROUNDED. EVERY FEEDER AND BRANCH CONDUIT SHALL HAVE CODE SIZED GREEN INSULATED GROUND CONDUCTOR.
- FURNISH AND INSTALL ALL LIGHTING FIXTURES, LAMPS, FUSES, BREAKERS, ETC. TO COMPLETE THE BRANCH CIRCUITS INDICATED.
- ALL 120V, 20A LIGHTING AND RECEPTACLE CIRCUITS REQUIRING MORE THAN 100' OF CONDUCTORS (ONE WAY) SHALL BE #10 CONDUCTORS.



MALICOAT - WINSLOW ENGINEERS, INC.
 MISSOURI STATE CERTIFICATE OF AUTHORITY #000421
 4840 RANGELINE STREET #101 TEL 573-875-1300
 COLUMBIA, MISSOURI 65202 FAX 573-875-1305
 FREDDIE MALICOAT, P.E.

ELLIFF HALL STUDIO RENOVATION
 ELLIFF HALL STUDIO RENOVATION
 709 E. DUNKLIN ST., JEFFERSON CITY, MO, 65101

CONTRACTOR SHALL CHECK & VERIFY ALL DIMENSIONS & CONDITIONS AT JOB SITE.
 DATE: 05-10-23
 REVISIONS:
 TITLE: POWER PLAN
 SHEET: E1
 PROJECT: 23091



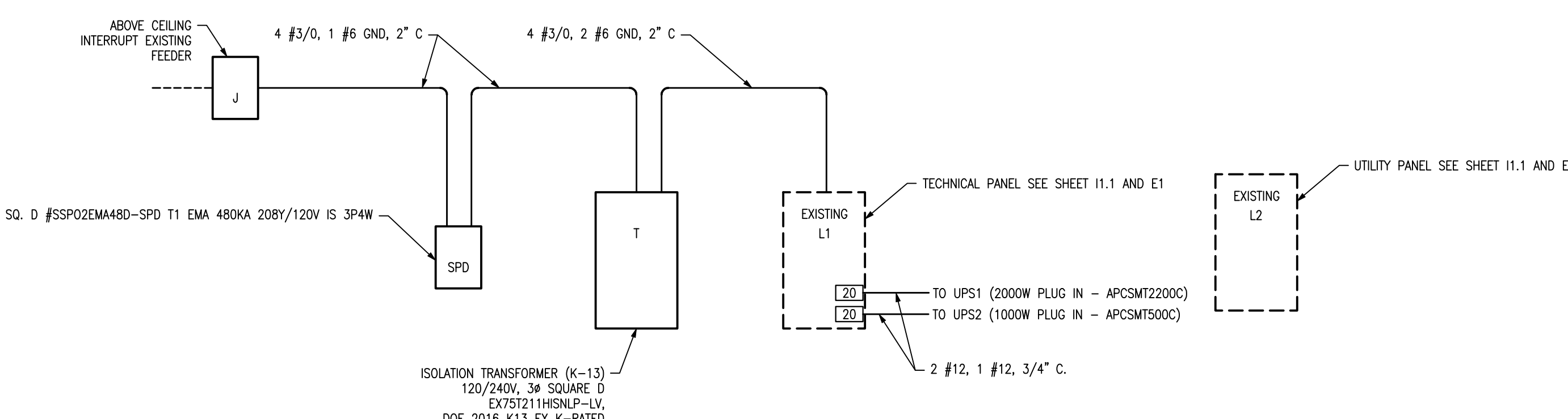
POWER PLAN
 SCALE: 1/4" = 1'-0"

ELECTRICAL SYMBOL SCHEDULE	
	P2-22,24 HOME RUN CIRCUIT TO PANEL P2, CIRCUITS 22,24
	EACH ARROW INDICATES ONE CIRCUIT
	SHORT HATCH MARKS INDICATE # OF PHASE CONDUCTORS
	LONG HATCH MARKS INDICATE # OF NEUTRAL CONDUCTORS
	NO HATCH MARK INDICATES TWO CONDUCTORS
	ELECTRICAL SERVICE OR FEEDER WIRING
	WIRING IN WALL OR CEILING - WIRING IN FLOOR
	RECEPTACLE OUTLET (DUPLEX - QUADRUPEX - SPECIAL POWER)
	COMMUNICATIONS OUTLET (TELEPHONE - CATV - DATA/PHONE)
	WALL SWITCH SINGLE POLE (3-WAY - DIMMER - 4-WAY - PILOT - SPEED - KEYED - TIMER)
	INCANDESCENT OR HID STYLE LIGHT FIXTURE (CEILING MOUNTED - WALL MOUNTED)
	FLUORESCENT STYLE LIGHT FIXTURE (ENCLOSED - STRIP) (S INDICATES SPLIT WIRED)
	EXIT LIGHT - EMERGENCY LIGHT - EMERGENCY/EXIT LIGHT
	OTHER RECEPTACLE OUTLET (CLOCK - CEILING - SPLIT WIRED - SINGLE)
	ELECTRIC PANEL
	SPEAKER - PUSH TO TALK
	JUNCTION BOX - PULL BOX
	DISCONNECT (FUSED - NONFUSED)
	STARTER - CONTACTOR
	ELECTRIC MOTOR (5 HP - 208V - 3 PHASE)
	THERMOSTAT - HUMIDISTAT (ZONE SUBSCRIPT)
	OUTLET MODIFIERS (MOUNT HEIGHT INCHES - GFI PROTECTED - WEATHER PROOF GFI)
	SMOKE DETECTOR - HEAT DETECTOR
	MANUAL PULL STATION - ALARM
	MAGNETIC DOOR HOLDER - INTERLOCK RELAY
	END OF LINE RESISTOR
	FIRE ALARM CONTROL PANEL
	DIALER

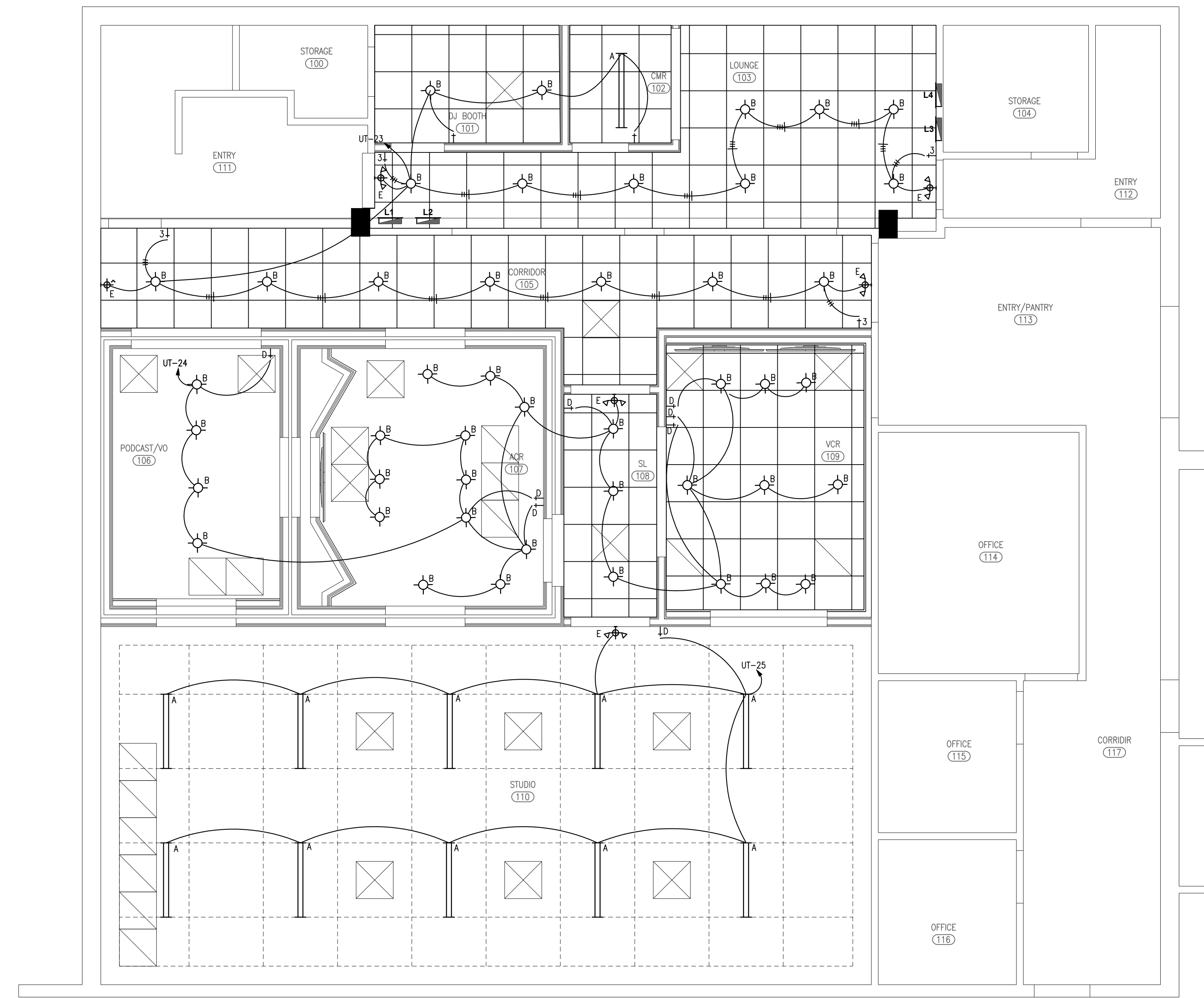
LIGHTING FIXTURE SCHEDULE

MARK	MANUFACTURER AND MODEL NUMBER	TYPE	LAMPS		MOUNTING	REMARKS
			#	SIZE		
A	LUMENLINE 2 LU2P	LED	1	48	PENDANT	1
B	LITON CH6C	LED	1	20	RECESSED	1
E	WILLIAMS EXIT/EM/LED-R-WHT-RC-D	LED	2	6	SURFACE	1

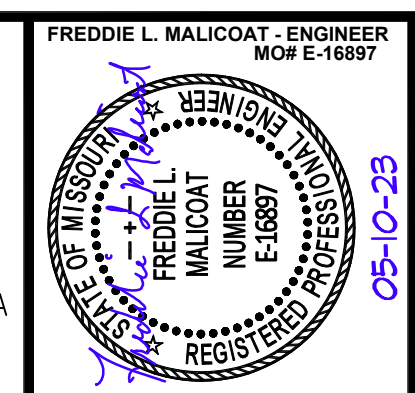
VERIFY COLOR AND MOUNTING HEIGHT WITH ARCHITECTURAL PLANS.
1. OR APPROVED EQUAL.



2 ELECTRIC RISER DIAGRAM
E2 NO SCALE



1 LIGHTING PLAN
E2 SCALE: 1/4" = 1'-0"



MALICOAT - WINSLOW ENGINEERS, INC.
MISSOURI STATE CERTIFICATE OF AUTHORITY #000421
LICENSE NUMBER E16897
4840 RANGELINE STREET #101 TEL 573-875-1300
COLUMBIA, MISSOURI 65202 FAX 573-875-1305
FREDDIE MALICOAT, P.E.

ELLIFF HALL STUDIO RENOVATION
ELLIFF HALL STUDIO RENOVATION
709 E. DUNKLIN ST., JEFFERSON CITY, MO, 65101

CONTRACTOR SHALL CHECK & VERIFY ALL DIMENSIONS & CONDITIONS AT JOB SITE.
DATE: 05-10-23
REVISIONS:

TITLE: LIGHTING PLAN & RISER

SHEET: E2

PROJECT 23091